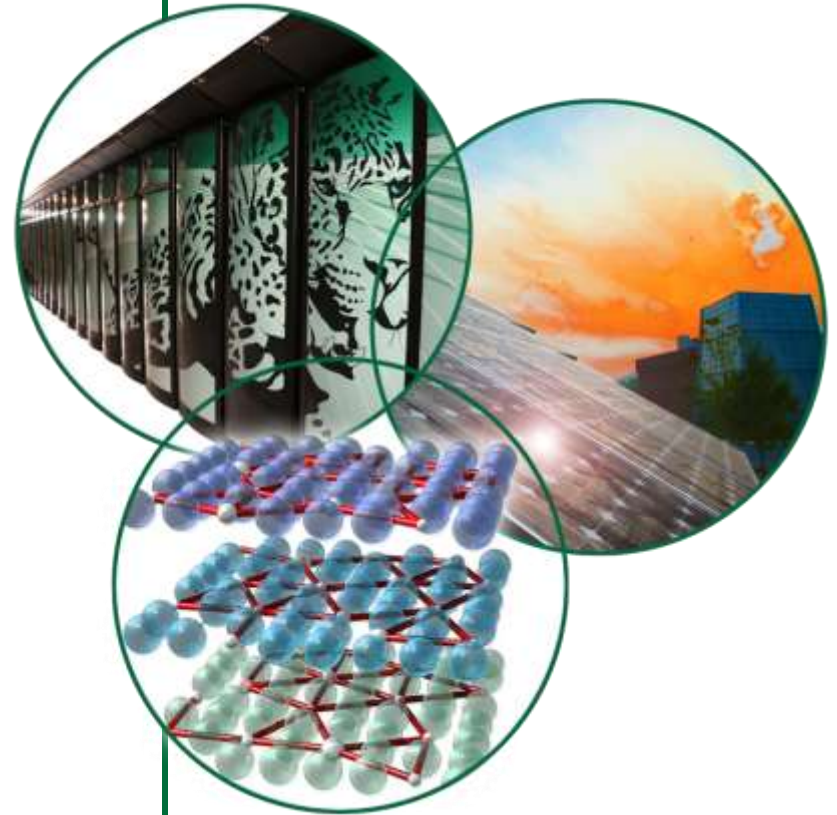


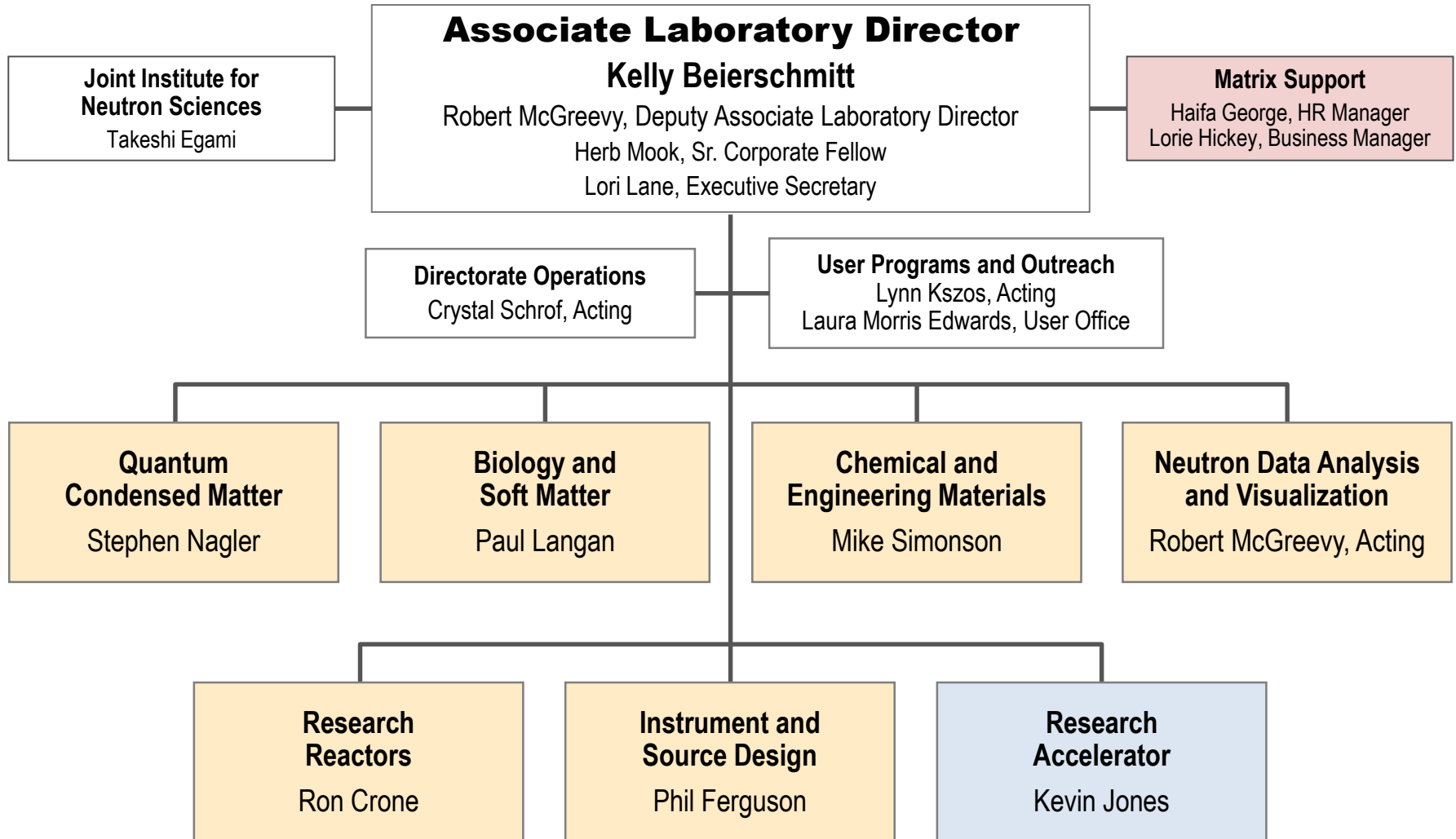
SNS Accelerator Advisory Committee

Kelly J. Beierschmitt
Associate Laboratory Director
Neutron Sciences Directorate

January 10-12, 2012



Organization aligned to focus on neutron scattering science delivery



Research Accelerator Division's (RAD) role has expanded to better enable science

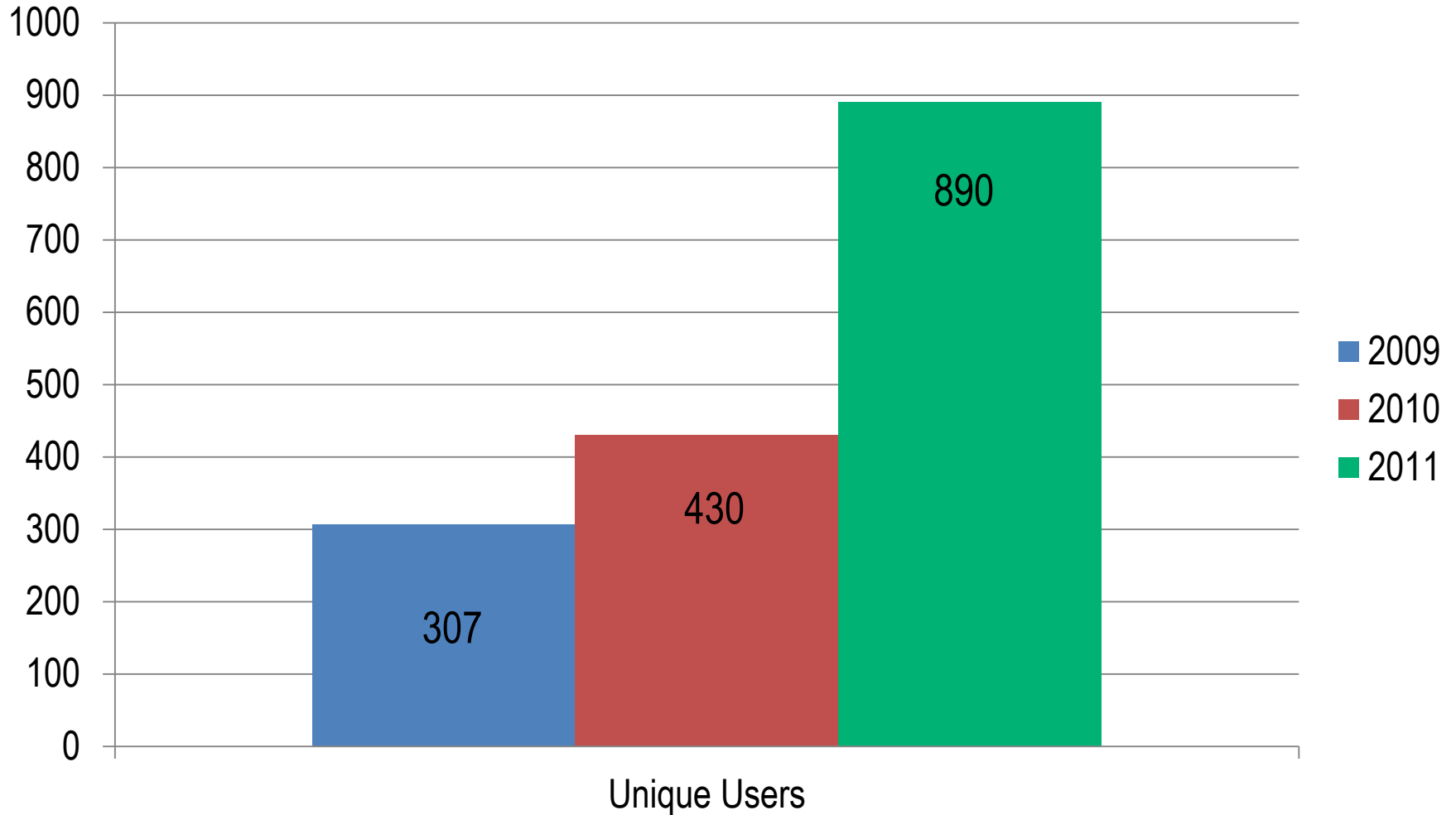
- Enables science divisions to focus on science delivery
- Transfers RAD's culture of operational discipline to instrument operations and scientific laboratories
- Brings all operational aspects under one organization
- Enables allocation of resources based upon corporate priority

We ask that you focus your work this week on Accelerator, Target and related Control Systems and Operations.

SNS beam availability exceeds our goal

Fiscal Year	Neutron Production Availability		Neutron Production Hours		Total Operating Hours	
	Commitment	Actual	Commitment	Actual	Commitment	Actual
2007	68%	65.7%	1500	2078	3500	3779
2008	74%	72%	2700	2807	4000	4032
2009	80%	80.7%	3500	3553	4500	4916
2010	85%	85.6%	3900	4250	4800	5310
2011	88%	92%	4300	5002	5000	5941
2012 (YTD)	90%	94.4%	4500	1633	5000	1843

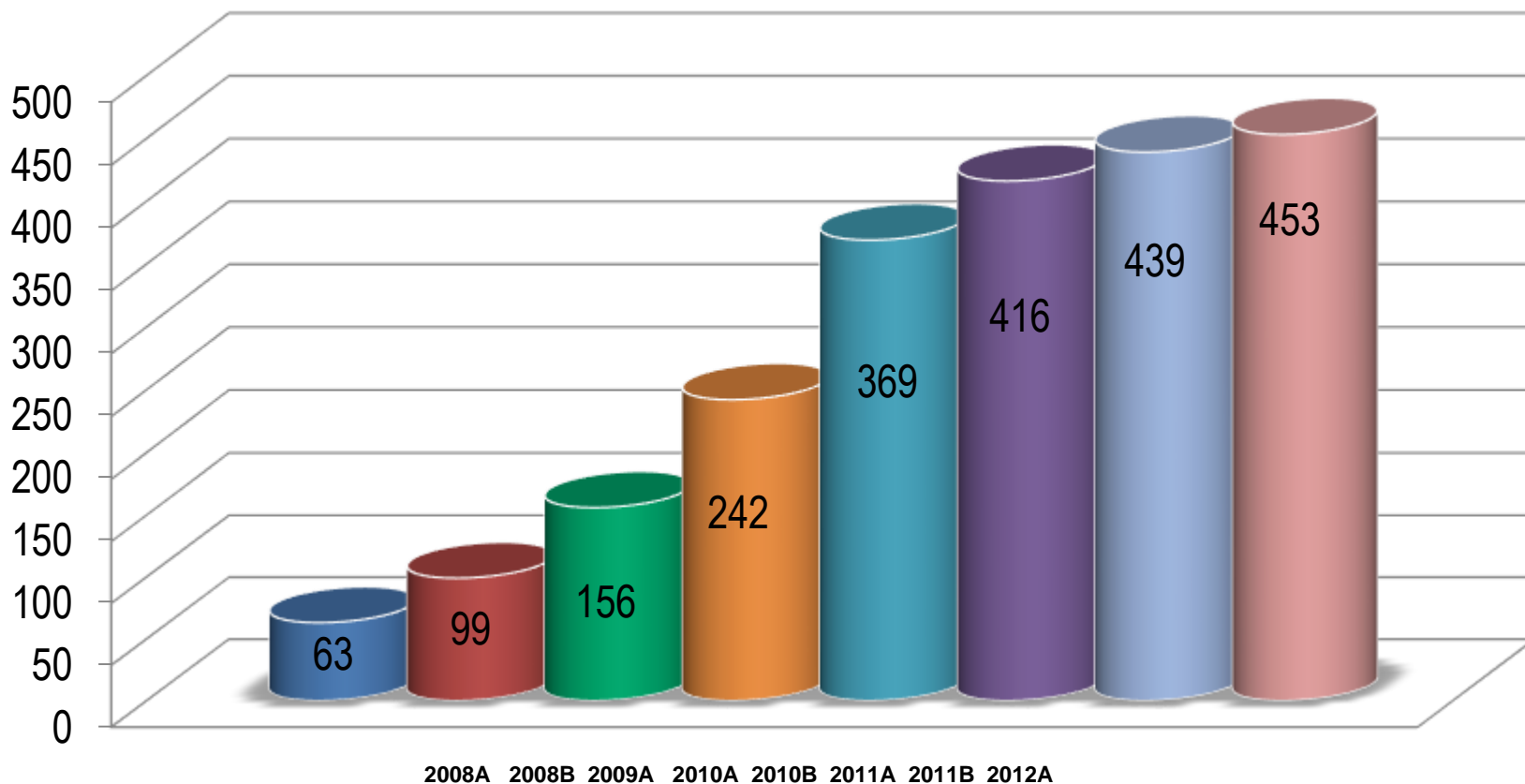
The SNS user community is growing



We have had 303 unique users this fiscal year.

Demand for neutrons at SNS continues to increase

SNS proposal calls since 2008



Approximately 174 proposals accepted in 2012A proposal call.

SNS continues to build its instrument suite

- SNS now has 13 instruments in the User Program
- Three additional instruments have come into the User Program since your last visit
 - NOMAD
 - VULCAN
 - TOPAZ
- This year we are commissioning two new instruments
 - VISION
 - HYSPEC



We have challenges that we are addressing

- Balancing increase in science funding without compromising accelerator and target operations
- Investing in neutron scattering instruments that were under-resourced during construction
- Tackling instrument detector and data acquisition/analysis problems
- Maintaining core capabilities to position organization for future opportunities



Questions